

BAG FILTERS



Engineered for versatility and ease of installation.

Ideal for a wide range of filtering and water treatment applications, these filters are particularly beneficial for life support systems in space-constrained plant-rooms.

- ✓ Ideal for small systems - a simple and robust alternative to sand-filtration.
- ✓ Often specified for systems under 20,000 litres (depending on factors and circumstances).
- ✓ Perfect for space-constrained plant rooms.
- ✓ Easy to install with flexible mounting options - base only, or wall and base, or wall only.
- ✓ Removable handle means less area required in plant room for mounting.
- ✓ Pipe size reducers enable connections from 4" to 2".
- ✓ Easy bag removal due to built-in bleed vent in the lid and hinged basket handle.
- ✓ 125µm standard filter bag (heavy-duty seamless felt)
- ✓ Connects easily to new/existing infrastructure.
- ✓ Four in-built mounting positions so the unit can be 'rotated' (on vertical axis).

Advanced Aquarium Technologies have pioneered unique techniques and technologies to design, build and operate inspiring and sustainable aquariums all over the world.

www.advanced-aquariums.com

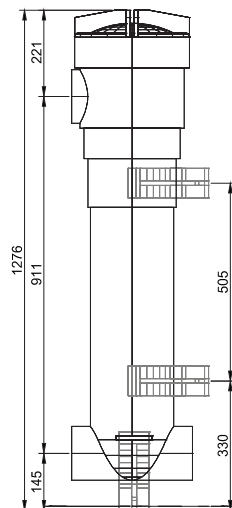
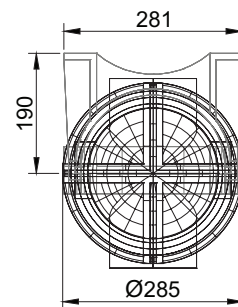
DISCLAIMER: While drafted with due care and diligence, this flyer is provided "as is", the information may change without notification and we do not guarantee that the flyer is free from errors or defects.

TECHNICAL SPECIFICATIONS

METRIC					
GENERAL SPECIFICATIONS		FILTER BAG			
Inlet/Outlet Port Size	2", 3", 4" BSPT - Female	Micron Rating (µm)	Flow Rate* (m3/hr)	PE/PP Felt	NMO
Temperature (°C)	4 - 70	3 - 10	3.0 - 4.8	✓	
Operating Pressure (bar)	0 - 7	25 - 100	6.8 - 11.8	✓	✓
Max Flow Rate (m³/hr)	40	125 (standard)	12.9	✓	✓
Filter Bag Dim (mm)	Ø180 x 810	150 - 300	13.8 - 18.1	✓	✓
Filter Basket Vol (L)	10	500 - 1000	22.2 - 30.0		✓
MATERIALS OF CONSTRUCTION		2000 - 3750	36.0 - 40.0		✓
Housing	GF PP	*Flow rate will vary depending on filterbag micron rating installed, and raw water quality. 125µm is the standard filter bag included (1 pc only)			
O'Ring	EPDM				

IMPERIAL					
GENERAL SPECIFICATIONS		FILTER BAG			
Inlet/Outlet Port Size	2", 3", 4" BSPT - Female	Micron Rating (µm)	Flow Rate* (gpm)	PE/PP Felt	NMO
Temperature (°F)	39.2 - 158	3 - 10	13.2 - 21.1	✓	
Operating Pressure (PSI)	0 - 100	25 - 100	30.0 - 52.0	✓	✓
Max Flow Rate (gpm)	176.1	125 (standard)	56.8	✓	✓
Filter Bag Dim (inches)	Ø7 x 32	150 - 300	60.8 - 79.7	✓	✓
Filter Basket Vol (gal)	2.64	500 - 1000	97.7 - 132		✓
MATERIALS OF CONSTRUCTION		2000 - 3750	158.5 - 176.1		✓
Housing	GF PP	*Flow rate will vary depending on filterbag micron rating installed, and raw water quality. 125µm is the standard filter bag included (1 pc only)			
O'Ring	EPDM				

DIMENSION REFERENCE



PRODUCT FEATURES

Built-in bleed vent in lid

connection sizes from 2" to 4"

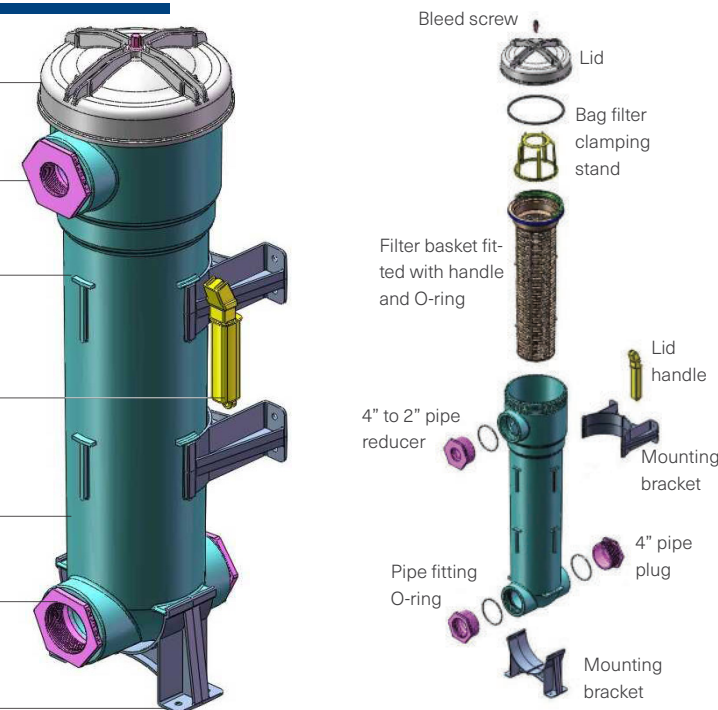
Heavy-duty, seamless felt bags

Multi-function handle fitted to basket, for easy bag removal

One-piece injection moulding construction

Flow rate up to 12m³/hr @ 125 µm

Flexible mounting options - base only, wall & base, or wall only



The World's Premier
Aquarium Infrastructure
and Services Specialist

© AAT Advanced Aquarium Technologies Pty. Ltd. 2023

AUSTRALIA

office@advanced-aquariums.com
+61 7 5476 5300

USA

office@advanced-aquariums.com
+1 281 645-4004

CHINA

aat@advanced-aquariums.com
+86 20 3901 0651